

Manufactures Low Voltage Switchgears

All Types of Micro Switches, Limit Switches & Foot Switches

BFS-14 SERIES

Technical Specification

Rating : 10A / 500V AC
 Body Material : Aluminium pressure die casting
 Contact Material : Silver Cadmium Oxide
 Terminal : Brass

Order Code	Description	Contact form	Rating
BFS-14/LS	Foot Switch, Without Wire	DPDT-CO	10A / 500 V AC



BFS-15 SERIES

Technical Specification

Rating : 10A / 500V AC
 Body Material : Aluminium pressure die casting
 Contact Material : Silver Cadmium Oxide
 Terminal : Brass

Order Code	Description	Contact form	Rating
BFS-15/LS	Foot Switch, Without Wire	DPDT-CO	10A / 500 V AC

BFS-16 SERIES

Technical Specification

Rating : 10 A / 250V AC, 15 A / 250V AC
 Body Material : Polycarbonate(unbreakable)
 Contact Material : Silver Cadmium Oxide
 Terminal : Brass

Order Code	Description	Contact form	Rating
BFS-16/A/C2.2	With 2 Core 2 Meter Wire	SPST-NO	10A / 250 V AC
BFS-16/B/C2.2	With 2 Core 2 Meter Wire	SPDT	10A / 250 V AC
BFS-16/X	Foot Switch Without Wire	SPDT-DB	10A / 250 V AC
BFS-16/XX	Foot Switch Without Wire	DPDT-DB	10A / 250 V AC
BFS-16/Z/C2.2	Push To ON, Push To OFF With 2 Core 2 Meter Wire	SPST- POPO	10A / 250 V AC

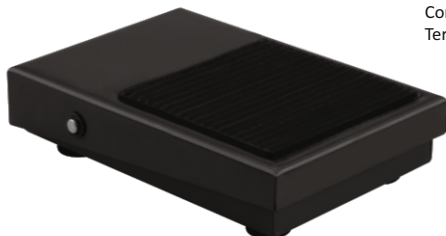


BFS-17 SERIES

Technical Specification

Rating : 6 A / 250V AC
 Body Material : MS Body
 Contact Material : Silver Cadmium Oxide
 Terminal : Brass

Order Code	Description	Contact form	Rating
BFS-17	Basic Foot Switch, Without Wire	SPDT	6A / 250 V AC
BFS-17/C2.2	Basic Foot Switch, With 2 Core 2 Meter Wire	SPST-NO	6A / 250 V AC
BFS-17/C2.3	Basic Foot Switch, With 2 Core 3 Meter Wire	SPST-NO	6A / 250 V AC
BFS-17/T/C4.3	Twin Foot Switch, With 4 Core 3 Meter Wire,	2 SPST-NO	6A / 250 V AC
BFS-17/T/H/C4.3	Twin Foot Switch With Handle, With 4 Core 3 Meter Wire	2 SPST-NO	6A / 250 V AC



FEATURES

- Compiling with IEC 60947-5-1
- Silver Contact
- Rugged design
- Highly Reliable
- Non-skid base rubber pad
- Easy to Operate
- Available in multi-pedal versions
- Available with USB type
- Unbreakable Polycarbonate body / Aluminum pressure die casting body / MS Body / Rubber
- Raised ribs on cover for positive traction during operation